



Surface Design Association Annual Report, 2019

Innovation in Fiber, Art and Design

Mission

Since 1977, Surface Design Association's mission is to promote awareness and appreciation of textile-inspired art and design through member-supported benefits including publications, exhibitions, and conferences.

2019 SDA Board of Directors

Astrid Bennett, President
Jorie Emory, Vice President
Chris Motley, Secretary
Betsy Konop, Treasurer
Teddy Milder
Tamryn McDermott
Michelle Lee
Andréa Banks
Alicia Decker
Andrea Vail
April Dauscha
Jenn McNamara

SDA TEAM

Executive Director: Karena Bennett
Journal Editor: Elizabeth Kozlowski
Managing Editor: Lauren Sinner
Art Director: Michelle Silver
Membership, Advertising & Outreach Manager: Carolyn Hopkins
Database Manager: Trevi Fountain
Website Manager: Crystal Van Dee
Social Media Manager: Sean Misdav

All SDA Team members work part time.

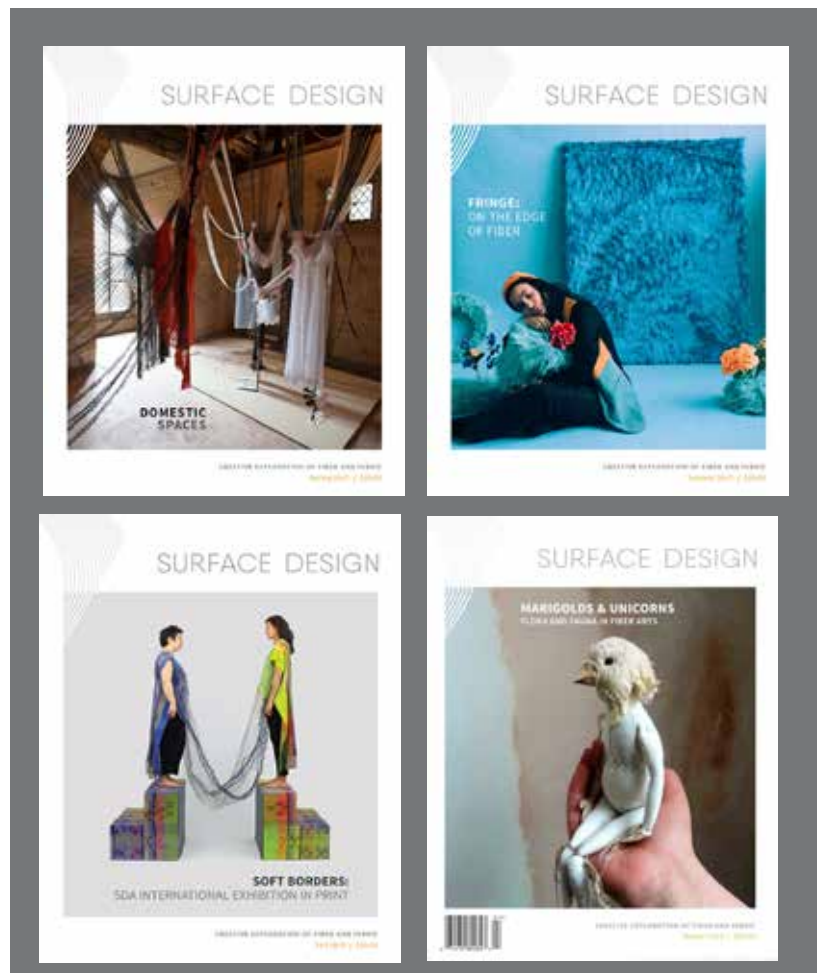
Surface Design Association

C/O NMCFO
3900 Paseo Del Sol
Santa Fe, NM 87507
707-829-3110
email: info@surfacedesign.org

In 2019, SDA again showcased the rich array of contemporary textile art by artists located in the United States and abroad. Initiatives included four digital and print, full-color beautiful Journals, numerous blog posts, a biennial conference in St Louis in partnership with *Innovations in Textiles*, five member-based exhibitions and two online exhibitions.

SDA JOURNAL

The Journal Team continues to produce beautiful quarterly full-color journals with a mix of content spanning a variety of interest areas. This team includes Editor Elizabeth Kozlowski, Managing Editor & Blog Editor Lauren Sinner, and Art Director Michelle Silver. SDA's blog continues to feature timely, informative and entertaining posts of interest to members and to visitors to our website. In 2019 Journal issues included: *Domestic Spaces* (Spring 2019); *Fringe* (Summer 2019); SDA's Exhibition in Print, *Soft Borders*, juried by Monika Auch of the Netherlands (Fall 2019) and *Marigolds and Unicorns* (Winter 2019-2020).



CONFERENCE & EXHIBITIONS



Beyond the Surface Biennial Conference, St Louis
SDA's biennial conference was held in partnership with *Innovations in Textiles*. Attendees were eager and enthusiastic about the mix of programming, exhibitions, workshops and hands-on activities. Attendees represented a younger age range than is typical for recent SDA conferences. Programming included:

- **Day-long Bus Tour** to exhibitions
- **Speaker day at the Missouri History Museum**, featuring Carrissa Carmen: *Site Lab, Surreal Innovations in Textile Environments* and Yvonne Osei: *An Art Practice Defined by Public Space, Discovery and Travel*. Side-by-side Artist presentations included *Nationally Known, Locally Grown*, with Kate Anderson and Basil Kincaid, and *Making a Life*, with Hannah O'Hare Bennett and Amy Meissner
- **Make It! Take It!** Sessions including the Collective Mending Sessions with Catherine Reinhart, Hello Looms!, and PechaKucha-type artist presentations



- **Student-focused activities**, including *Future Tense 2019* annual student exhibition, and *Figuring it Out: Truths of Being Successful* panel discussion. Although they couldn't attend the conference due to scheduling issues, 40 students and staff from Kansas City Art Institute also visited the SDA exhibitions over a period of two days (see photo below).



Pre-conference workshops, well received and held for the first time since 2013, included presenters Amy Meissner, Megan Singleton, Anne B. Coddington, Jodi Colella, Merill Comeau, Kate Anderson, Laura Foster Nicholson, Jennifer Reis, and Marianne Baer.

SDA thanks major sponsor Dharma Trading Co, as well as others: John C Campbell Folk School, Penland School of Craft, Jacquard, ProChemical & Dye, and Stencil Girl Products. Partnering organizations included Innovations in Textiles 2019; the St Louis Artists' Guild; Webster University Arcade Building - Contemporary Art Projects; Edwardsville Arts Center; Craft Alliance; Central Print; Baer Designs; the Weavers Guild of St. Louis; & Missouri Fiber Artists Organizational (MOFA).

CONFERENCE EXHIBITIONS



***Beyond the Surface*, SDA's Annual Juried Members' Exhibition, St Louis Artists' Guild, September 20 - October 23.**

In a wonderful space showcasing works by 48 artists, Jo Stealey and James Arendt served as jurors. Awards for *Beyond the Surface* were supported by the Lenore G. Tawney Foundation. Award winners were Kathy Nida (First Place); Marie Bergstedt (Second Place) and Leslie Simon (Third Place.) Additional participants included Jessica Wildman Katz, George-Ann Bowers, Kate Barber, Roz Ritter,



Ann Clarke, Susan Hensel, Gretchen Morrissey, Karen Gustafson, Anette Millington, Steve Donegan, Ann Codrington, Dorothy McGuinness, Ruth Tabancay, Dong Kyu Kim, Michael Rohde, Deborah

Kruger, Nanhee Kim, Hale Ekinici, Judy Bales, Connie Lippert, Lily Lee, Jennifer Davies, Melinda K.P. Stees, Susan Avila, Alexander Hernandez, Faith Hagenhofer, Helen Geglio, Margaret Jo Feldman, Chris Motley, Eva Camacho, Saberah Malik, Victoria Potrovitza, Marie Fornaro, Catherine Reinhart, Raija Jokinen, Barbara De Pirro, Amy Sands and Bridget O'Malley, Marie McInerney, Jenn McNamara, Xia Gao, Frances Parry, Christine Aaron, April Dauscha, Astrid Hilger Bennett and Jennie Frederick.

***Future Tense 2019*, SDA's Annual Student Exhibition**

Edwardsville Art Center, September 6-October 11.

Juried by Kim Eichler-Messmer and Tamryn McDermott selected 27 works by 21 student artists, celebrating the creative work of student artists, designers, and makers working with or inspired by fiber or textile materials or



techniques. Awards for *Future Tense 2019* were supported by the Lenore G. Tawney Foundation and include Erin LaRocque (First Place); Lizbeth Contreras (Second Place-Lucy Primm Award sponsored by the St Louis Weavers Guild); and Michelle Chan, (Third Place).



***SDA Small Works*, Biennial All-Member Exhibition**

Webster University's Contemporary Art Projects, St Louis, October 1- December 15

This exhibition included small format works by 82 artists from 6 countries. Award winners included Joy Stocksdale Best in Show: Saaraliisa Ylitalo; Second Place: Danette Pratt; and Third Place: Mary Ruth Smith. This exhibition is on display in full on SDA's website. Images left to right: Saaraliisa Ylitalo (First Year), Danette Pratt (Watch Later_Share).

Connections: To and From, created through a collaboration between SDA, St Louis Artists' Guild, Kansas City Art Institute and Indiana University. Pairs of students from KCAI and IU exchanged art works that both worked on. Results were displayed in the outside display windows at St Louis Artists' Guild and also included works by MFA candidates.

EXHIBITIONS, Continued

Soft Borders, SDA's Exhibition In Print

This exhibition featured in the Fall 2019 *SDA Journal* included work by 27 artists. Monika Auch, of The Netherlands, served as juror and brought an "international perspective paired with a contagious passion for our field," according to Journal Editor Elizabeth Kozlowski. Awards included: Guest Juror Award: Susan Smith; Craft and Community Award: Alicia Decker; Innovation Award: Anne Claude-Cotty; Surface Design Award: Amy Usdin; Material Exploration Award: Ruth Tabancay; Fiber Reinterpreted Award: Andrea Donnelly; and Next Generation Award: Kristeen Buchanon. Other featured artists were Heather Schulte, Janice Lessman-Moss, Eva Camacho-Sanchez, Jessica Wildman Katz, Betty Vera, Nancy Koenigsberg, Hannah Shimabukuro, Gretchen Morrissey, Anna Chupa, Susan Hensel, Meredith Grimsley, Kei'Anna Anderson, Kristi Swee Kuder, Barbara Osborne, Raija Jokinen, Mo Kelman, Michelle Browne, George-Ann Bowers, Mary Babcock and Alison Muir.

ONLINE MEMBER EXHIBITIONS

The SDA website featured two curated online member exhibitions, now archived on SDA's website, which were promoted on social media.

- **Home – Holding On and Letting Go**, curated by Sharon Newton-Denson, premiered August 2019 and explored the idea of home through selected works focused on place, memory and connection. The collection is anchored by the question of how we define home particularly in an increasingly mutable landscape where communities, traditions and the earth itself are changing faster than ever before.
- **Embodiment**, curated by the SD7: Karie Amstutz, Anna Carlson, Diana Eicher, Marjorie Fedyszyn, Kristin Hoelscher-Schacker, Kristi Swee Kuder, Debra Maertens, premiered in March 2019 and explored the following topic: Humans have complex relationships with their bodies and must reconcile the literal embodiment of self with personal, familial, and cultural expectations. What happens between total body acceptance as a child and the shift towards self-obsession, the need to "improve" and remake our bodies into something else?



Connections: To and From, St Louis Artists' Guild

REGIONAL EVENTS

As a followup to *A Day with SDA At the Fuller Craft Museum*, Northeast SDA states have added several new Area Representatives and will host a regional event and exhibition in 2020. New Area Reps in Southern California also are working with the committee to launch activities in 2020.

SDA GRANTS & AWARDS

The Grants & Awards Committee selected the following individuals for grants and awards in 2019:

Creative Promise Awards

Recognizing excellence by one undergraduate and one graduate student in the field of textile media: Meagan Smith, Emily Schmidt

Personal Development Grants

Supporting SDA members' creative development, scholarship and research: Anne-Marie Groulx, Anni Toole

Socially Engaged Practices Grant

Promoting the use of art & design skills to advance positive social change that benefits underserved communities or demographics: Cielia Ross-Gotta

Outstanding Student Awards

Rewarding innovative work in textile media by students nominated by their instructors: Maryam Aziz, Natthanan (Gain) Vatthanasangpan, Miranda Pratt, Katherine Mills, Ger Xiong, Joann Quinones, Alya Corner, Katie Warnock, Paulina Fuenzalida-Guzman, Yoshimi Teh Soo Mei, Becca Hahn, Emily Schmidt, Meagan Smith, Danielle Cavinder, Aridna Miramontes, Swan Staveski, Oliver Jaskowski, Breanna Benson, Taylor Orr, Mengting Shen, Lindsey Lagemaat, Etta Sandry, Emarie Burns, Jacob Martinez, E. Aki Johnson, Sarah Hudson, Laura Boban, Kyung Min Cho, Manuela Benaim, April Traugott, Erin King, Ian Price, Catherine Liu, Emily Popp, Julia Pakstas and Christine Weiss.

Small Event Grants

Awarded to various state and regional SDA groups or others who stage events in the field of fiber and textiles.



Installation view of Future Tense 2019.

SDA FINANCIAL REPORT, 2019

Income

Membership Dues	\$ 180,376
All Contributions	\$ 27,696
Programming	\$ 76,245
Grants	\$ 5000
Total Income	\$ 289,317

Expenses

Programming	\$ 268,791
Management	\$ 20,205
Fundraising	\$ 0
Total Expenses	\$ 288,996
Net income:	\$ 321

SDA achieved a balanced budget in 2019. Revenue and expenses included those for the biennial conference.

GRANTS to SDA

- After ceasing operations, Friends of Fiber Art distributed surplus funds to nonprofits of their choosing. SDA was awarded \$5000 to support exhibitions. SDA is grateful to FoFA and very sorry to see it close.
- The Leonore G. Tawney Foundation awarded SDA \$12,000 in funding in 2018 to support the grants and awards program as well as exhibition awards this year and the next.
- Creative New Zealand awarded SDA a \$6000 grant, to be paid/accounted for in 2020, towards content for an issue focused in New Zealand scheduled for 2020.

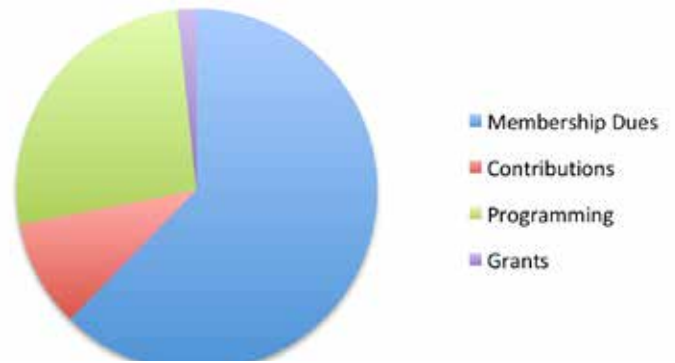
FUNDRAISING & CONTRIBUTED INCOME

With the support of 112 members, SDA raised an impressive \$27,696 in 2019. SDA member dues only cover 60% of operating costs. Contributions to SDA ensure it can continue to provide thought-provoking content via the Journal and blog, and offer high quality programming including annual exhibitions, grants, awards, and education opportunities. A thank you to all the members who helped SDA reach its goal. Donors are listed later in this document.

SDA Conference Donor Event: A Conversation with Jane Sauer and Mark Richard Leach

St Louis area members and residents Jane Sauer and Marianne Baer hosted an evening donor event with food in Marianne's art filled home in conjunction with SDA's *Beyond the Surface Biennial Conference*. Jane Sauer discussed her experience as both an artist and a Gallery owner. A founding director of the Mint Museum, Mark Richard Leach discussed his thoughts about the museum scene as well as legacy planning with CERF, the Crafts Emergency Relief Fund. Leadership Circle members, annual donors of \$250 or more, were offered a complimentary ticket.

2019 INCOME



2019 EXPENSES



SDA TEAM

Karena Bennett has now served as Executive Director since November 2018. SDA is very pleased to have her leadership, organization skill sets and communication skills. SDA operates in a virtual space. New Mexico CFO (NMCFO), SDA's outside accounting firm, handles aspects of financial management according to an SDA Internal Controls document which separates and validates procedures and duties of the Executive Director, Treasurer and Accountant.

BOARD & COMMITTEES

The SDA Board added the following new Directors in July: Andrea Vail, April Dauscha, Alicia Decker and Jenn McNamara. Board makeup now also consists of younger members, a positive trend for the organization. Committees are working together to advance areas that Board members cannot manage. These include Education, Exhibition, Fundraising, Grants & Awards, Membership, Conference/Programming and Website. Marketing will be added in 2020.

WHAT LIES AHEAD IN 2020?

Look for four more stellar SDA Journals, member exhibitions plus regional events in the Northeast and Southern California. SDA will continue its working plan to host its next biennial conference in 2021, during September's *Textile Month* in New York City, in conjunction with Parsons School of Design and others. Stay tuned!

SDA Area Representatives

Lisa Dixon (AZ)
Jessica Cadkin & Julia Feldman (CA-north)
Carrie Burckle (CA- south)
Ellen Schiffman (CT)
Suzanne Connors (FL-south)
Anita Louise Bracalente (IN)
Adrienne Sloane & Nancy Crasco (MA/RI)
Judith Daniels & Jennifer Lee Morrow (ME)
Heather Fletcher (MN)
Wilma Butts (Canada-NB/NS)
Kate Dean (NH)
Rachael Dorr (NYC/NJ)
Eve Jacobs-Carnahan & Rosalind Daniels (VT)
Gabriela Nirino (WA)
Shannon Molter (WI)
Karina van Vught (Europe)

Education Committee

Andrea Vail, Chair. April Dauscha, Jenn McNamara, Mary Ruth Smith, Kim Eichler-Messmer, Tamryn McDermott

Exhibition Committee

Gerri Spilka & Alicia Decker, Co-chairs; Alisa Banks, Carol Eckert, Stefanie Gerber

Event Programming Committee

Astrid Bennett, Stefanie Gerber, Teddy Milder, Francesca Curcuru, with the Innovations in Textiles 2019 Committee

Fundraising Committee

Andrea Banks, Chair; Jorie Emory, Astrid Bennett

Grants & Awards Committee

Chris Motley, Chair; Joy Lavrencik, Joanne Weiss, Cathy Stechschulte, Linda Henke, Pat Darif, Ileana Soto

Membership Committee

Michelle Lee, Chair/Liaison to Area Reps; Rachael Mayer, Becky Flax, Susan M. Clark

Website Committee

Teddy Milder, Crystal van Dee



Images from the Conference:

(Top) SDA Team members Karena Bennett and Carolyn Hopkins register attendees at the Missouri History Museum
(Bottom): friends greet and gather at the Missouri History Museum



BEYOND ^{the} SURFACE

Join us in St. Louis **October 3-6, 2019**
for Surface Design Association's Biennial Conference.

Pre-Conference Workshops
Exhibitions + Tours
Presentations + Conversations about contemporary fiber art

Held in conjunction with *Innovations in Textiles 2019*,
a regional event showcasing more than 40 textile exhibitions.
Open to the public. Early bird registration ends August 31.
Visit our conference page at [www.surfacedesign.org](http://www surfacedesign.org).

Speaker images, clockwise from upper left: Carissa Carman, Yvonne Osei, Amy Meissner, Basil Kincaid, Hannah Bennett, Kate Anderson



innovations
in textiles 2019   

SDA's **Beyond the Surface** Conference is made possible with the generous support of our sponsors and partnering institutions.



St. Louis
Artists' Guild
inspiring art experiences



Left: Panelists Alicia Decker and Catherine Reinhart, from Figuring it Out: Truths of Being Successful, panel discussion moderated by Andrea Vail. Right: Scholarship students Michelle Chan, from Kansas City, and Carina Rodriguez, from Cost Rica. Also shown: Rodolfo Leiva.

THANK YOU

Your support matters!

Last year, we organized three member exhibitions, presented grants and awards to artists and groups, published four *Surface Design Journals*, and came together for our biennial conference in St. Louis.

We could not do this work without the commitment of SDA members.

to the generous donors who supported SDA in 2019!

SDA 2019 Leadership Circle, Gifts of \$250 +

Lynne Allen
Kate Barber
Astrid Bennett
Caroline Browne
Judy Carney
Ann Clarke
Judith Content
Candace Edgerley
Caryl Fallert-Gentry
Leslie Horan Simon
Ivy Jensen
Ann Johnston
Michelle Lee
Bette Levy
Susan Lordi Marker
Melinda Lowy
Nancy Middlebrook
Teddy Milder
Betsy Miraglia
Chris Motley
Gerri Spilka
Mary Beth Yates



Surface Design
Association

surfacedesign.org

SDA 2019 Friends

Anonymous
Christine Aaron
Evette Allerdings
Lois Anderson
Jim Arendt
Susan Avila
Andréa Banks
Alisa Banks
Regina Benson
Marie Bergstedt
George-Ann Bowers
Anita Bracalente
Jean Cockburn
Nancy Crasco
Pat DaRif
April Dauscha
Laura Davidson
Jennifer Davies
Alicia Decker
Peggy Dembicer
Steve Donegan
Sara Drower
Yvonne Duesterhoeft
Carol Eckert
Mary Elmusa
Jorie Emory
Francine Even
Marjorie Fedyszyn
Laura Feeleus
Margaret Jo Feldman
Susanne Foster
Alex Friedman
Helen Geglio

Cindy Grisdela
Cheryl Herr
Sharla Hoskin
Eve Jacobs-Carnahan
Julie Jensen
Jorie Johnson
Shelley Jones
Janet Kawada
Mirka Knaster
Nancy Koenigsberg
Betsy Konop
Akiko Kotani
Frances Krueger-Jackson
Deborah Kruger
Marcia Lavine
Martha Liddle-Lameti
Ingrid Lincoln
Patricia Malarcher
Saberah Malik
Cheryl Markham
Cynthia Martinez
Maureen McDermott
Jenn McNamara
Cheryl Mincone
Norma Minkowitz
Jackie Mirabel
Pamela Morris
Dominie Nash
Wendy Osterweil
Pat Owoc
Almuth Palinkas
Helen Peterle
Jennifer Reis
Lesley Richmond

Michael Rohde
Deann Rubin
Arturo Sandoval
Ellen Schiffman
Sharon Seim
Martha Sielman
Sarah Siteman
Dolores Slowinski
Mary Ruth Smith
Becky Stevens
Joy Stocksdale
Kathy Suprenant
Ruth Tabancay
Linda Thompson
Lesley Turner
Andrea Vail
Crystal VanDee
Sylvia Vander Sluis
Nancy Vuolo
Yvonne Wakabayashi
Janice Weingrod
Peggy Wiedemann
Saaraliisa Ylitalo

Grants & Sponsorships

- Lenore G. Tawney Fnd.
- Friends of Fiber Art International
- Dharma Trading Co.
- John C. Campbell Folk School
- Penland School of Craft
- StencilGirl Products
- Jacquard Products
- Pro Chemical & Dye